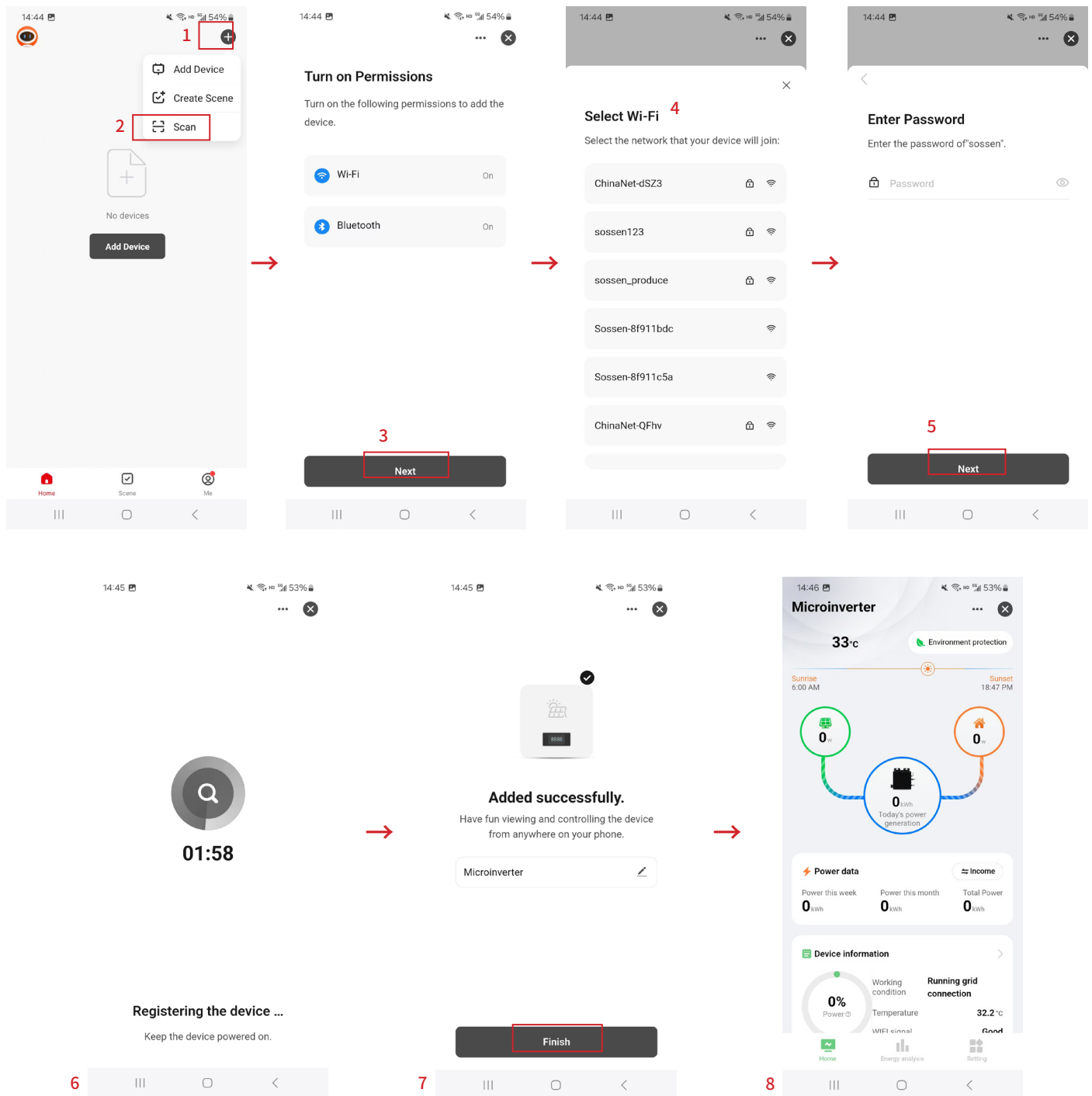


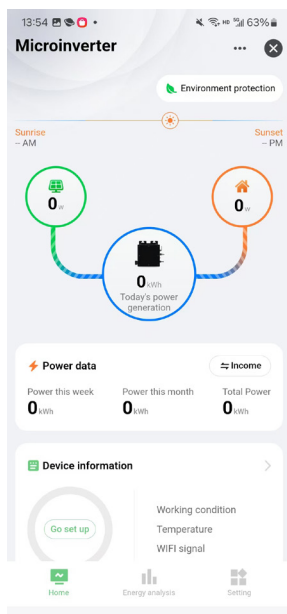
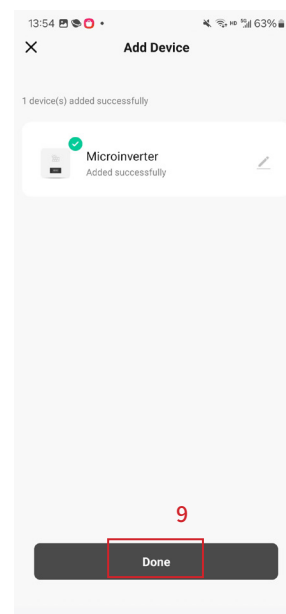
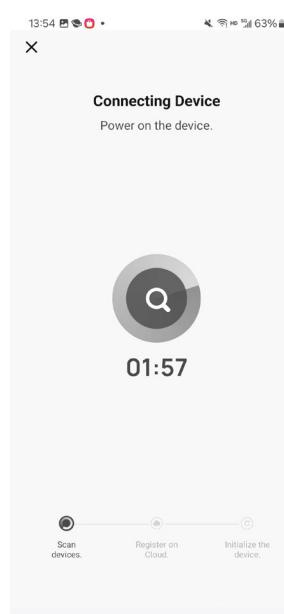
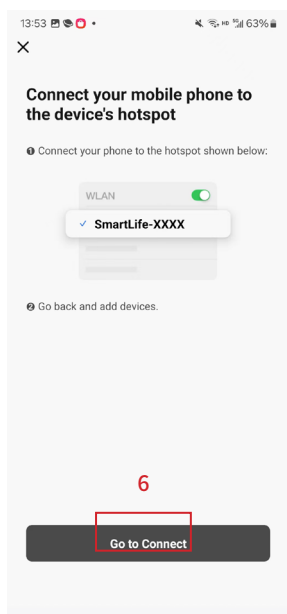
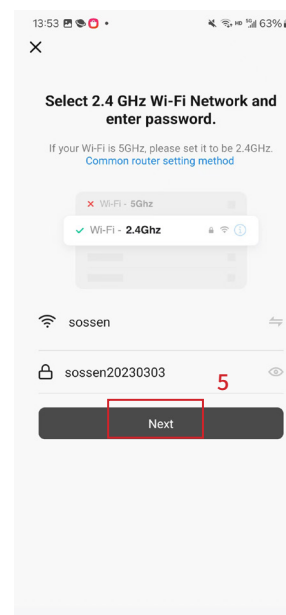
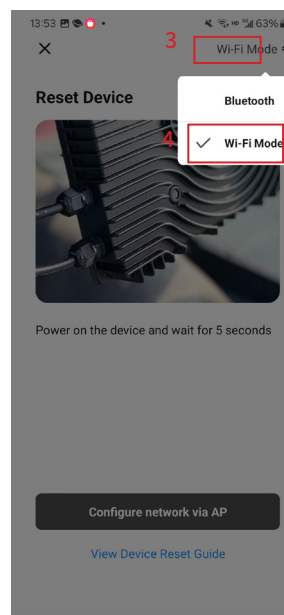
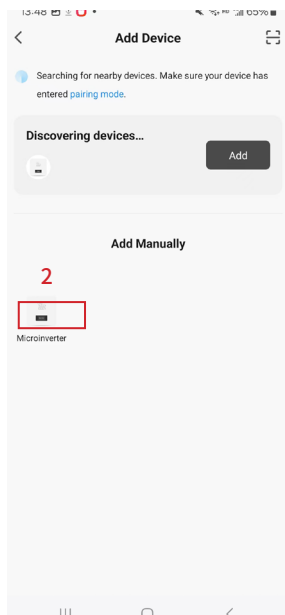
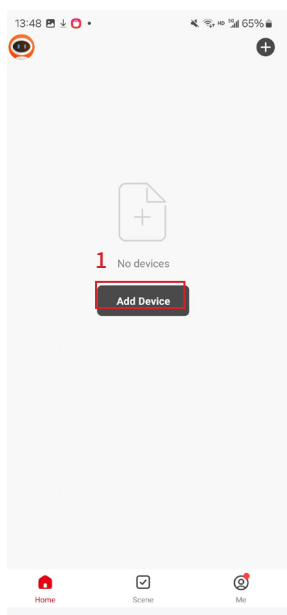
Method 1: Scanning QR code:

Click the “scan” button in the upper right corner → Click “Next” button → Select your Wi-Fi → Enter your Wi-Fi password and click “Next” button → Enter the waiting page → Enter the page of successful connection, and click “Finish” button to enter the page of Micro Reverse data display.



Method 3: Wi-Fi Networking

Click “Add Device” button → Click on this button → Click the upper right corner, select “Wi-Fi Mode” button → Click “Next” button → Click the “Go to Connect” button → Select the Wi-Fi with prefix “smart life” → Return to the waiting page → Connect to the network successfully, click the “done” button to enter the micro reverse data display page



Method 4 Bluetooth Networking:

Click the “Add Device” button. → Click the icon of Micro Reverse under “Add manually” → Click the upper right corner, select “Bluetooth” button → Click the “Configure network via Bluetooth pairing” button → Click the “Next” button → Enter the waiting page → Connect to the pairing network successfully, click “done” button, enter the micro reverse data display page

